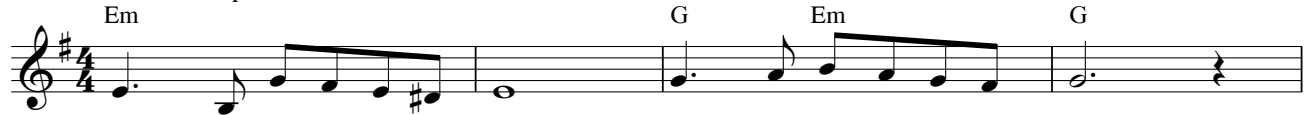


Nazdam (Come, Lord Jesus)

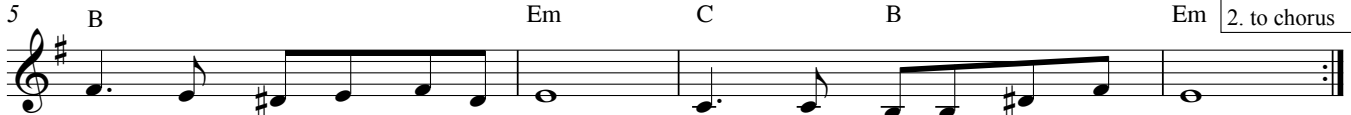
Farsi Christian Worship Song

VERSE

♩ = 95 Moderate Speed



1. Ey Ee - sa naz-dam bee - ya Bah - re man baash rah - na - maah.
 2. Come, Lord Je - sus, to my side, Come and be my one true guide;
 3. Be to ta - va - kol daa - ram, Dar har cheez baah rah - ba - ram.
 4. I put full trust in You now; To Your ma - jes - ty I bow;



- Dar dast - ha - yat een jaa - naam, Ey haa - dee - eh nee - koo - yam.
 I am who - lly in Your hands, Gen - tle Sa - viour, Son of Man.
 Sal - ta - nat kon dar ghal - bam, Ey Ma - see - he mah - boo - bam.
 Be my sove - reign, reign with - in. O Me - ssi - ah, pre - cious King.

1. to next verse
2. to chorus

CHORUS



- Tesh - ne - ye vo - joo - de - tam, Tesh - ne - ye ho - zoo - re - tam,
 I am thirst-ing for Your be - ing; For Your pre - sence I am year - ning;



- Dar - khaast ko - nam Mon - jee - yam, Ha - mee - she baash rah - ba - ram.
 I am ask - ing, O my Sa - viour, Be my guide for e - ver - more.

1. to English chorus
2. to instrumental

INSTRUMENTAL

1. to next verse
2. end here - FINE

Verse 1.

Ey Eesa nazdam beeya,
 Bahre man baash rahnama.
 Dar dast-hayat een jaanam,
 Ey haadeeyeh neekooyam

Verse 2.

Come, Lord Jesus, to my side,
 Come and be my one true guide.
 I am wholly in your hands.
 Gentle Saviour, Son of Man.

Chorus

Teshneye vojoodetam
Teshneye hozoozetam
Darkhaast konam Monjeeyam,
Hameeshe baash rahbaram.

I am thirsting for Your Being,
For Your Presence I am yearning.
I am asking, O my Saviour,
Be my Guide for evermore.

Verse 3.

Be to tavakol daaram,
 Dar har cheez baash rahbaram.
 Saltanat kon dar ghalbam,
 Ey Maseehe mahboobam

Verse 4

I put full trust in You now.
 To Your majesty I bow;
 Be my sovereign, reign within,
 O Messiah, precious King.

Optional Middle Verse

Ghalbam raa nagoshaayam,
 Heechkas raa jaa nadaham.
 Tanhaa hozoorat khaaham,
 Ey Eesaaye masloobam

I will guard my heart, my throne,
 You can enter, You alone.
 Your dear Presence, I desire,
 O my crucified Messiah.